

Fender Chatter

A Monthly Newsletter



NOVEMBER 2012

ROAD CLEANUP

October 13th

Seven Model T members showed up and completed the road cleanup they included: Bill Barr, Bill Mullins, Rick/Donald Carnegie and Steve/Julie Heid. Thank You, folks for your dedication and work to this club project. (More information at November 2nd meeting.)

OCTOBER NOMINATIONS

The October T Club nominations are as follows:

President-Jamie Allen

Vice President - Bill Barr and Mark Hutchinson

Secretary - Ed Hope

Treasurer-Betty Patterson

NOVEMBER VOTING

The voting is completed during the November T club meeting. Write - ins are allowed as written in the by laws. See Page 6 for the form.

UPCOMING DECEMBER 16TH SOUP PARTY AT

JANICE AND MARK HUTCHINSON'S HOME

January Banquet

The Annual Inland Empire Model T Club Banquet and Officer Installation is January 2013. Tickets are \$25. More information is expected at our next meeting. Cheri Moore is in charge of our banquet.

Membership Renewal:

The yearly dues are \$20 per year for an individual or family and due by January 31st of each year. Please renew your membership or join the club as a new member. This form can be turned into Jim Patterson/Roster membership or the Treasurer. We look forward to seeing you. Thank You
(See Page 7 for Membership Form)

Where did I put that?

General club information	Page 2
Monthly meeting minutes	Page 3
Tours and Activity Reports	Page 4
Oh Yeah	Page 5
Nomination For m	Page 6
Renewal Membership Form	Page 7
For Sale/ Wanted /Services	Page 7

Prez message

Nov 2012

This month is officer elections. Being involved in the Spokane T Club hasn't yielded any drawbacks for me. As a group we are involved with the local and national community both publicly and car related. Just getting out and driving our Model T's does good for both society and our club. Every time I take a drive I can see the joy it brings to people as they drive by, plus I like the drive.

Jillian and I got the concrete finished in the shop. I wired in some light fixtures and proceeded to move cars into their new home. The next step is to start framing the inside for insulation and then start wiring for outlets. This is all a bunch of work, but very rewarding. Just being able to walk in and flick a switch and see everything was pretty exciting! Mike



General
Club
Information

Please direct club correspondence to the clubs mailing address:
IEMTFCA
PO Box 11708
Spokane Valley, WA
99211-1708



Dues


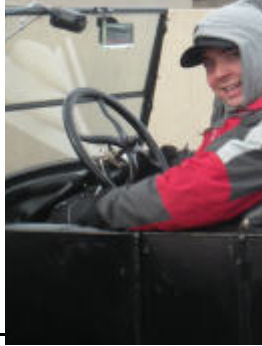


The yearly dues are \$20 per year for an individual or family and due by January 31st of each year. Please renew your membership or join the club as a new member. We look forward to seeing you.



Newsletter Editor
Diane Swanson

Thanks for your emails, keep them coming!

If you find those oops items, send in the fixes to the newsletter at fenderchatter@gmail.com by the 18th so that it can be made right or at least made believable.

President	Vice President	Secretary	Treasurer
			
Mike Robison 844-5900	Jamie Allen 208-704-0137	Ed Hope 570-8333	Betty Patterson 214-9522

Committee	Lead	Contact
Banquet for 2013	Cheri Moore	509-466-8593
Email /Mailing/Roster/ Membership/Printing/	Jim Patterson	509-214-9522
Entertainment/Programs	Mike Robison	509-844-5900
Fenderchatter	Diane Swanson	Fenderchatter@gmail.com
Greeting Committee	Mike Stormo	509-725-4531
Legal	Harvey	509-218-1437
Library	Gene Kicha	509-926-4872
Nametags and Patches	Steve and Julie Heid	509-928-0215
Photographer	Jillian Robison	509-844-5900
Refreshments	Candy Burgess	509-924-0898
Road Clean-Up	Travis Thosath	509-847-4393
Safety/ Seminars	Mike Robison	509-844-5900
Scrapbooks-Photo Album	Roy Moffit	509-449-6305
Sunshine Report	Susie Carnegie	509-922-1805
Swap Meet	Jamie Allen	208-704-0137
Tours	Hal Moffit	509-924-9161
Webmaster Facebook- Inland Empire	Mike Robison Model T Club	www.spokane modeltclub.com

The monthly meeting begins at 7:30 PM on the 1st Friday of each month at the Opportunity Presbyterian Church, 202 North Pines, Spokane Valley, WA. Our next regular meeting is November 2nd at the church. A reminder for anyone wishing to join other T Club members for the regular pre-meeting dinner that it will be at 5:30 - 6:00 PM at Conley's Restaurant next to the White Elephant just east of Pines at 12622 E. Sprague in Spokane Valley. We hope to see you there!

Spokane Model T Club Minutes October 5 2012

**Meeting called to order at 7:30 P.M.
by President Mike Robison.**

**Welcoming Committee - Rick C filling
in for Mike S. "No new faces here".**

**Vice President Jamie Allen: We have a
check from the V8 Club for \$400. \$300
is for working at the swap meet and
\$100 is a refund for the booth.**

Secretary's Report:

**Janice's Soup Party is to be on the
16th of December, a Sunday, and not
the 13th as reported in the previous
minutes.**

**Motion was made, seconded, and
passed to accept the September meet-
ing minutes, with correction, as
printed in the Fender Chatter.**

Treasurer's Report:

**Betty presented the report and motion
was made to approve the Treasurer's
report as presented at the meeting.**

Committee Reports:

Tours -

**Mike R reported on the Movie Night
that he and Jillian sponsored. The
movie was "The Train", a 1964 movie
starring Burt Lancaster. Germans
loaded up a train full of French art to
be taken back to Germany. The
French Resistance has to stop it.
About 50 people attended in 22 cars**

**that included T's, A's, a VW and an
Austin Healey.**

**Mike also reported on the Eastside vs
Westside 3rd Annual flathead run.**

**Two Model T's entered. 53 cars entered
from the Westside and 75 from
the Eastside. Eastside won. Mike and
Nan drove a military jeep. "It was
very hot and smokey." A lot of smoke
from wildfires.**

**Joe reported on the John Redinger
Tour. There were 3 Ts and 6 Model
As. They had a good dinner that night.
A motion was made to pay John Red-
inger \$50 toward the cost of portable
toilets. Motion was seconded and
passed.**

**Road Cleanup - Meet at Rosaur's on
3rd at 2:00**

**Email/Roster/Membership - Jim said
he only got two mailed newsletters re-
turned. He is sending out 40 copies
which takes two rolls of stamps.**

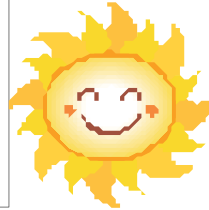
**Banquet for 2013 - Arrangements
have been made.**

**4th of July Tour 2013 - Mark H says,
"Nothing new, it's going to be a very
nice tour."**

Old Business:

**Charitable Contributions Committee:
Jillian is proposing a change in the by-
laws. She would like to change article
5, Section 1 to include "charitable con-
tributions committee." See Page 5**

WE'RE THINKING OF YOU
Card for the passing of Allen Henzen
 Thanks Susie Carnegie



Candy's Cookie Corner
November
Hal Moffit
Howard Gothmann

Tours and Activity Reports

CHECK THE CLUB WEB SITE FOR SPUR-OF-THE-MOMENT EVENTS.
 Tours may be arranged at the last minute so check the club web site Calendar of Events at
<http://www.spokanemodeltclub.com> for the latest activities.

UPCOMING EVENTS

November 2nd, 2012 Regular meeting 7:30pm at Opportunity Presbyterian Church
December 7th, 2012 Regular meeting 7:30pm at Opportunity Presbyterian Church
December 16th, 2012 Janice/Mark Hutchinson's SOUP PARTY at their home.
January Banquet At the Ramada Inn Airport. Starts at 6pm with a social hour. There will be a
 No Host Bar available. Dinner Buffet will begin at 7pm. Cheri Moore

FOR TOUR IDEAS CONTACT HAL MOFFIT

TUESDAY NITES

For free workshop space, company and advice, too! <http://www.antiqueautoranch.com>
 Also, Check out the info on Spokane Model T Club website. www.spokanemodeltclub.com
 And available on Facebook: Inland Empire Model T Club

Smaller projects like coils are being rebuilt. Several wheels have been restored this past few months.
 Major projects of engine rebuilding or maintenance are being completed year around especially before every Montana 500. Tom Carnegie gives monthly updates at our monthly meetings.

Please send the Fenderchatter pictures of your projects
 and a brief description how it is going :)

Allen L. HENZEN (01/27/1941 - 10/13/2012)

It is with regret that we inform you of Allen Henzen's passing last Saturday, Oct. 13th. Allen and his wife, Beverly, were active Spokane Model T Club members until 2010 when they moved to Cornelius, Oregon. Allen held the club Treasurer for several years. Our thoughts and prayers go out to the family.

The Spokane Model T Club



Please sign guest book at:

<http://www.legacy.com/guestbooks/spokesman/guestbook.aspx?n=all-enzen&pid=160520630&cid=full>

OH? YEAH..

Continued ... From page 3

Old Business: Also Article 6, to be added, "charitable contributions committee to develop guidelines to dispense funds for charitable donations and give advice to the club for their approval on a continuing basis."

Nominations:

Motion made to nominate Jamie Allen for President. Motion was seconded and passed.

Motion made to nominate Bill Barr for Vice President. Motion was seconded and passed.

Motion made to nominate Mark Hutchinson for Vice President. Motion was seconded and passed.

Motion made to nominate Ed Hope for Secretary. Motion was seconded and passed.

Motion made to nominate Betty Patterson for Treasurer. Motion was seconded and passed.

Motion made to close nominations. Motion was seconded and passed.

Steve Heid won the drawing

Adjourned 7:54 P.M.

Submitted by Ed Hope, Secretary



Pretty 1920's Purses and Handbags

Posted on September 12, 2012 by Debbie

The Vintage Dancer Magazine

Today our purses carry everything we could possibly need for a busy day. In the 1920's however the purse or handbag was a thing of beauty and only a little practicality. Since most daily items were purchased at neighborhood shops with credit accounts under a father's or husband's name there was no need to carry money other than some pocket change for the movies or a soda pop. Instead women's 1920's purses carried only the hot new necessities of the day- Make Up!

Face powder, lipstick, and sometimes rouge were carried in small decorative compacts that were as pretty as the bags that carried them. Some varieties of bags even had the compacts built right into the bag handle. Inconspicuously hidden the compacts were always close by for a quick touch up job. A refined lady would powder her nose in the ladies room but those new liberated flappers would apply make up right at the dinner table. Gasp!

Such beautiful ladies required caring equally beautiful purses. There was an art to making metal woven "mesh" handbags as well as beaded fabric bags. Hand tooled leather clutches with intricate art deco designs or snake skin puchettes made day wear slightly less formal. Puchettes which had carved metal frames and clasp closure or fold over envelope flaps were also elaborately decorated for evening formal dress. Glass beads, seed beads, and round faceted beads were hand woven at home using mail order kits. Metal mesh bags were mass produced in a variety of designs, shapes and coloring techniques. Talking about the variations of mesh handbags in worthy of an entirely separate post (and will be discussed in the 1920's Style Guide book.)

The key styles of 1920's purses were that they were small with thin strap(s) or clutch varieties. Some were small boxes with handles. Whenever possible purses complimented the wearer's dress. Beaded bags with beaded dresses, leather with fur, etc. Vintage 1920's purses are very collectible today. The age of the beads and metals makes them extremely fragile as well. If you want to wear one to your next 1920's party I would recommend you purchase one of the many reproduction purses available today.



OH? YEAH..

Continued from Page 5.....

1920's Style Cloche Hats

That classic hat of the roaring twenties is the cloche hat. Bell shaped with side adornments of flowers and geometric designs they topped women's heads of the 1920's. Now you can be just as stylish today with these vintage inspired 1920's style cloche hats.

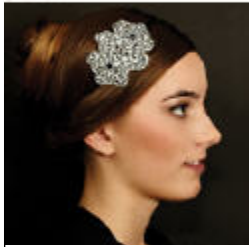


1920's Fashion

1920s Fashion centered around the revolution of freedom in clothing and morals. Both mens and womens 1920s fashions broke out of the prim and proper mold of Victorian ideals. Fashion in the 1920s lost confining garments and gained comfort while showing off an entirely new and outrageous use of color and decoration. It is an era that is fast becoming the "new" vintage fashion revival thanks in part to several TV shows, movies and mini series depicting life in the 1920's such as Boardwalk Empire, Downton Abby, The Artist and The Great Gatsby.

1920's Style Flapper Headbands and Headdresses

Add some 1920's style sparkle and jazz with a flapper headband or flapper headdress in a variety of styles and budgets.



.ELECTION BALLOT 2013 CLUB OFFICES

PRESIDENT :

_____ **Jamie Allen**

Write in _____

VICE - PRESIDENT:

_____ **Bill Barr**

Write in _____

_____ **Mark Hutchinson**

SECRETARY:

_____ **Ed Hope**

Write in _____

TREASURER :

_____ **.Betty Patterson**

Write in _____



MEMBERSHIP/ RENEWAL
Model T Ford Club of America
Inland Empire Chapter
P.O. Box 11708
Spokane, WA 99211-1708

Date: _____..
 Name _____ Spouse's Name _____..
 Address: _____ City _____ State _____ ZIP _____..
 Phone #'s: Home: _____ Work: _____ Cell: _____..
 Insurance Carrier & Policy # _____..
 MTFCA member ? Yes / No National Member # _____..
 E-Mail Address : _____..

Newsletters will be sent email unless otherwise requested in writing. Thank you for your support...

Model T's Owned: Any changes since 2011? Yes / No..

Year: Body Style: Condition Codes:..

_____	R = Restored..
_____	U = Unrestored..
_____	O = Original..
_____	PR = Partially Restored..
_____	BC = Basket Case..

Please renew your membership or join the club as a new member. Update this form and send with your.. check payable to the Spokane Model T Ford Club, P.O. Box 11708, Spokane, WA 99211-1708. Annual.. dues are \$20.00 per household renewed by January 31st of each year. If more than 5 Model T's are.. owned, please list them on the back of this form...

You are encouraged to join the national club, the Model T Ford Club of America, for \$35.00 / year Mail.. check to MTFCA, P.O. Box 126, Centerville, IN 47330-0126. Six full-color bi-monthly magazines with.. world-wide distribution are included with annual membership...



FOR SALE / WANTED / SERVICES



For pictures of ads, if available, go to the Spokane Model T Club website:.. www.spokanemodeltclub.com/for-sale.php..

John Hutchinson hutchinj@acn.net

If you have any interest call me at 403-236-9682 at suppertime, thanks, Must Sell. Great condition 15,000 for the Cadillac and 9,000 for the T. See attached. Hutch



For Sale
Model 27T
And
76 Cadillac



IEMTFCA
PO Box 11708
Spokane, WA
99211-1708

Fender Chatter

A Monthly Newsletter



Fender Chatter is published monthly by the Inland Empire Chapter Model T Club of America in Spokane, WA. To be included, as space permits, in the next newsletter, items must be received no later than the 20th of the month. Please submit your articles, photos, trip reports, adventures, Ford T parts for sale, want ads, ideas, etc. to fenderchatter@gmail.com

See you next month and safe-T in your driving